

#PLAY

THE

CYMBALS  
& PERCUSSION

CATALOGUE

DIFFER

ENCE

UFiP

EARCREATED CYMBALS

2 #History  
8 6 #Bionic series  
#Class series  
#Class series - Brilliant finish  
12 #Natural series  
#Rough series  
14  
18 16 #Extatic series  
#Supernova  
#Tiger series  
20 #M8 series  
22 #Experience series  
28 #Experience series Blast  
30 #Sounds & Percussion  
36 #Symphonic & Marching  
40 #Gongs & Tam Tams  
46 #Tuned instruments  
#Be social 48

# #index



# #A HISTORY OF PASSION

Since 1931, UFIP produces the finest cymbals in the world!

What sets UFIP apart from all the rest, is our unique casting process, called Rotocasting®. While every other cymbal available on the market is the result of a process of rolling and subsequent force pressing, UFIP professional B20 Rotocast cymbals are created through a procedure of centrifuge-casting.

This process ensure the removal of all the impurities present in the alloy bronze, granting at the same time a greater thickness of the bell compared to those cymbals obtained by simple rolling and pressing.

UFIP cymbal is a truly unique instrument; from casting to tempering, hammering to finishing every process is completed by hand, with machinery only ever being used in support of our skilled and dedicated Cymbal Smith. The result is an instrument that is as individual as you are as a drummer.

UFIP is not a mass product; it has been created using the finest, purest and most sonorous bell bronze B20 (20% Tin, 80% Copper). No other alloy can offer such tonal character and dynamic range.

For your next cymbal don't choose by name... trust your ears!

Play the difference

# #bionic series

The New BIONIC has evolved into an even more exciting and musical range with a new twist on the original Bionic concept, making this series even more contemporary and totally up to date. A truly stunning playing experience for the rock and metal drummer that requires a real musical cymbal. These cymbals are faster and more dynamic, but still retain the power and cut of the original Bionic classics. The Bionic sets a new standard, simply awesome! Hammered especially deep and wide, then polished to a lustrous golden finish, giving the cymbal added warmth, richness and tonality, the new Bionic Series offers great control and versatility in any musical environment.

## MAIN FEATURES

- Alloy** - Cast Bronze B20.
- Production** - Cast using the "Rotocasting"® procedure, completely handmade, deep hammered with double punch, hand polished.
- Level** - Professional.
- Application** - Hard Rock, Rock, Heavy Metal, Fusion.
- Sound** - Powerful, bright and warm with many overtones, wide dynamic and sustain.

	6"	7"	8"	9"	10"	11"	12"	13"	14"	15"	16"	17"	18"	19"	20"	21"	22"
SPLASH					⊙	⊙	⊙										
CRASH										⊙	⊙	⊙	⊙	⊙	⊙	⊙	
RIDE H/M															⊙	⊙	⊙
CRASH RIDE															⊙	⊙	⊙
HI HAT								⊙	⊙	⊙							
CHINA														⊙	⊙	⊙	

**NEW FOR 2014**  
CRASH RIDE 20" 21" 22"





# #class series

Class is UFIP! This series is the result of almost 80 years of cymbals manufacturing, making Class the most complete and versatile range available. The SCS (Sound Control System) allows us to classify every cymbal based on its final weight using three categories – High, Medium and Low, giving the drummer a complete coverage of pitches.

	6"	7"	8"	9"	10"	11"	12"	13"	14"	15"	16"	17"	18"	19"	20"	21"	22"	
SPLASH H/M/L	⊙	⊙	⊙	⊙	⊙	⊙	⊙											
CHINA SPLASH					⊙	⊙	⊙	⊙										
CRASH H/M/L								⊙	⊙	⊙	⊙	⊙	⊙	⊙	⊙	L		
FAST CRASH								⊙	⊙	⊙	⊙	⊙	⊙					
CRASH RIDE																⊙	⊙	⊙
RIDE H/M/L													⊙	⊙	⊙	⊙	⊙	
SIZZLE RIDE															⊙	⊙	⊙	
HI HAT H/M/L					⊙		⊙	⊙	⊙	⊙	L							
WAVE HI HAT							⊙	⊙	⊙									
FAST CHINA									⊙		⊙		⊙		⊙			

## MAIN FEATURES

- Alloy** - Cast Bronze B20.
- Production** - Cast using the "Rotocasting"® procedure, completely hand made, cross hammered, hand finished.
- Level** - Professional.
- Application** - Rock, Hard Rock, Pop, Fusion, Funk, Acoustic, Jazz, Latin, World Music.
- Sound** - Versatile sound range, powerful but controlled, glassy and brilliant with a wide dynamic range.

## NEW FOR 2014

LIGHT HI HAT 16"  
CRASH RIDE 20" 21" 22"





# #class series brilliant finish

New CLASS brilliant finish. Lightweight models. Faster and more dynamic sound, warm and deep.  
The new Class Brilliant offers a warm and deep sound, more dynamic and faster than the regular Class. The new Class Brilliant are ideally suited to Pop, Fusion and Acoustic music.

## MAIN FEA- TURES

**Alloy** - Cast Bronze B20.

**Production** - Cast using the "Rotocasting"® procedure, completely hand made, cross hammered, hand finished.

**Level** - Professional.

**Application** - Pop, Fusion, Funk, Acoustic, Jazz, Latin.

**Sound** - Fast and dynamic, warm and deep.



6" 7" 8" 9" 10" 11" 12" 13" 14" 15" 16" 17" 18" 19" 20" 21" 22"

SPLASH			⊙	⊙	⊙	⊙	⊙																	
CRASH								⊙	⊙	⊙	⊙	⊙	⊙	⊙	⊙									
RIDE																⊙	⊙	⊙						
HI HAT							⊙	⊙	⊙															
FAST CHINA									⊙		⊙		⊙		⊙									



# #natural series

The Natural Series have been sensitively updated and fine tuned with the purpose of getting back to the main features that have defined this range since its conception.

The New Natural are darker, richer and warmer, they are faster in response and considerably more versatile.

The weight of the crashes have been reduced, as have the weight of the Splashes, Rides and Chinas. The heavy weight in the Rides and Hi-Hats disappear, and we retain the Medium and Light weight models.

	6"	7"	8"	9"	10"	11"	12"	13"	14"	15"	16"	17"	18"	19"	20"	21"	22"
SPLASH			⊙		⊙		⊙										
CRASH									⊙	⊙	⊙	⊙	⊙	⊙	⊙		
CRASH RIDE															⊙	⊙	⊙
RIDE M/L															⊙	⊙	⊙
HI HAT M/L							⊙	⊙	⊙	⊙	L						
CHINA								⊙		⊙			⊙		⊙		

## MAIN FEATURES

**Alloy** - Cast Bronze B20.

**Production** - Cast using the "Rotocasting"® Procedure, thermal procedure for reduction of surface tensions, completely hand made, deep hammered with double punch.

**Level** - Professional.

**Application** - Jazz, R&B, Fusion, Blues, Country, Acoustic.

**Sound** - Controlled, dark, rich and warm with frequencies concentrated on the low range of the sound spectrum.

## NEW FOR 2014

LIGHT HI HAT 16"  
CRASH RIDE 20" 21" 22"



# #rough series

## MAIN FEATURES

The sound of the Rough Series is unique, a balanced mix of both power and control. A completely new system of turning is used to create these cymbals - Micro Lathing. This process creates the powerful character that defines this range. Rough Series are the perfect choice for any studio or live situation where a powerful controlled sound is required.

The range is completed by the introduction of 19" and 21" crashes, 15" Hi-Hats and the new Rides 20"-21"-22" in Medium weight.

**Alloy** - Cast Bronze B20.

**Production** - Cast using the "Rotocasting"® Procedure, deep hand hammering using five different punches, finished using final handcrafted turning system.

**Level** - Professional.

**Application** - Studio, Rock, Hard Rock, Fusion.

**Sound** - Powerful, penetrating and controlled with frequencies concentrated on the mid range of the sound spectrum.

**NEW FOR 2014**

**CRASH RIDE 20" 21" 22"**

6" 7" 8" 9" 10" 11" 12" 13" 14" 15" 16" 17" 18" 19" 20" 21" 22"

	6"	7"	8"	9"	10"	11"	12"	13"	14"	15"	16"	17"	18"	19"	20"	21"	22"
SPLASH					⊙	⊙											
CRASH									⊙	⊙	⊙	⊙	⊙	⊙	⊙	⊙	
CRASH RIDE															⊙	⊙	⊙
RIDE H/M															⊙	⊙	⊙
HI HAT						⊙	⊙	⊙	⊙								
WAVE HI HAT						⊙	⊙	⊙									
CHINA											⊙		⊙		⊙		





# #extatic series

The Extatic Series represents a perfect hybrid of Jazz and Rock cymbals. The unusual final turning, unique hammering process, choice of weights and the blending of the dark rich tones of the Natural Series coupled with the dynamics of the Class Series make the Extatic range the new benchmark for Pop, Fusion and Melodic Rock.

## MAIN FEATURES

**Alloy** - Cast Bronze B20.

**Production** - Cast using the "Rotocasting"® Procedure, hand hammered using cross hammering, finished using a combination of Natural and Class processes.

**Level** - Professional.

**Application** - Pop, Fusion, Melodic Rock, Funk.

**Sound** - Controlled and rich with medium sustain, attack and volume with frequencies concentrated on the mid range of the sound spectrum.

## NEW FOR 2014

LIGHT HI HAT 15" 16"  
EXTRA LIGHT RIDE 20" 22"

6" 7" 8" 9" 10" 11" 12" 13" 14" 15" 16" 17" 18" 19" 20" 21" 22"

	6"	7"	8"	9"	10"	11"	12"	13"	14"	15"	16"	17"	18"	19"	20"	21"	22"
SPLASH					⊙	⊙											
CRASH M/L								⊙		⊙	⊙	⊙			⊙		
RIDE M/L/XL															⊙ XL	⊙ XL	
HI HAT R/X							⊙	⊙	L	L							
SWISH CHINA											⊙	⊙		⊙	⊙		⊙





# #supernova

## MAIN FEATURES

The Supernova Series is a result of two years research and development. Over this period we tested many different combinations of materials, weights, shapes, hammering and finishing processes.

The result is awesome! Fast response, crystal clear and glassy tone. Though not excessively powerful these cymbals sparkle with an incredibly dynamic and contemporary sound.

The range is completed by the introduction of 14" and 16" chinas.

**Alloy** - Sheet Bronze.

**Production** - Innovative hand hammering procedure using fast rotation, Brilliant Finish, Hand Polished.

**Level** - Professional.

**Application** - Hip Hop, Drum and Bass, Funk and other Urban genres.

**Sound** - Dynamic, Crystal Clear, Fast Response, Brilliant.

6" 7" 8" 9" 10" 11" 12" 13" 14" 15" 16" 17" 18" 19" 20" 21" 22"

	6"	7"	8"	9"	10"	11"	12"	13"	14"	15"	16"	17"	18"	19"	20"	21"	22"
SPLASH					⊙	⊙											
CRASH								⊙		⊙	⊙	⊙	⊙	⊙			
RIDE															⊙	⊙	⊙
HI HAT								⊙	⊙								
SWISH CHINA									⊙		⊙		⊙		⊙		





# #tiger series

The Tiger Series are pressed cymbals, which are given the same level of attention, care and hand hammering that we use in the production of our Professional Rotocast series resulting in a high quality mid range product. The Tiger Series are produced using a special surface treatment, giving them their unique look and a sound that is explosive, powerful and rapid in response, proving them to be ideal for Rock, Metal and Punk genres.

## MAIN FEATURES

- Alloy** - Sheet Bronze Cusn 8.
- Production** - Special hardening Procedure, completely hand hammered, finished by hand.
- Level** - Semi Professional, Intermediate.
- Application** - Hard Rock, Heavy Metal, Punk, Rock.
- Sound** - Explosive, Powerful, Quick Response with lasting Sustain.

Available in configuration set with cymbal bag included  
 SET A (16" 20" 14"HH)  
 SET B (16" 18" 13"HH)

	6"	7"	8"	9"	10"	11"	12"	13"	14"	15"	16"	17"	18"	19"	20"	21"	22"
SPLASH					⊙	⊙											
CRASH									⊙	⊙	⊙	⊙	⊙	⊙	⊙		
RIDE															⊙		⊙
HI HAT							⊙	⊙									
CHINA											⊙		⊙		⊙		





# #m8 series

M8 Series cymbals are made using brass blanks that are produced to our specifications. Though M8 is an entry level cymbal it is still treated with the highest quality standards and hand crafted production processes to ensure a product worthy of the UFIP name. A balance between cost and quality, the M8 Series can be considered a good alternative to other mass produced products available on today's market.

## MAIN FEATURES

- Alloy** - Sheet Brass.
- Production** - Hand hammered, hand finished.
- Level** - Entry Level.
- Application** - All Musical Genres.
- Sound** - Clear, Powerful, Complete and Dynamic.

Available in configuration set with cymbal bag included  
 SET A (16" 20" 14"HH)  
 SET B (16" 18" 13"HH)

	6"	7"	8"	9"	10"	11"	12"	13"	14"	15"	16"	17"	18"	19"	20"	21"	22"
SPLASH							⊙										
CRASH									⊙		⊙		⊙				
RIDE																⊙	
HI HAT								⊙	⊙								





# #experience series

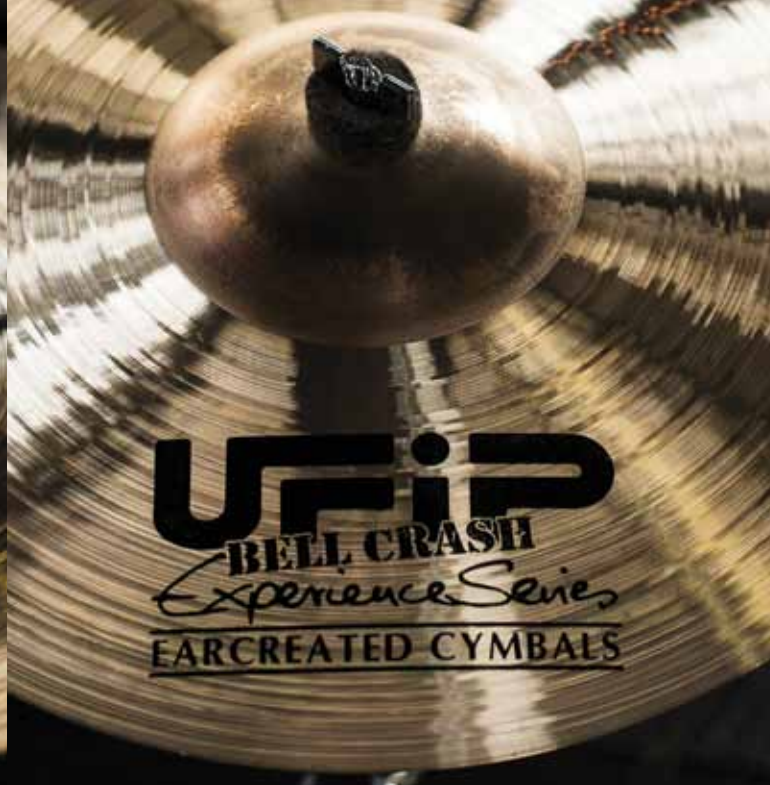
Experience denotes our experimental range. From new sound research and co operation with our endorsees, the Experience Series was born. We are able to react rapidly to an ever evolving and fast paced Musical Industry. Experience Series cymbals are limited in quantity and are available as follows:







SAMBA SPLASH  
10" 12" 13" 14"



BELL CRASH  
17" 18" 19" 20"



REAL CHINA TIGER  
18" 20"



REAL CHINA CAST BRONZE  
14" 15" 16" 18" 20"

## #SAMBA SPLASHES

A small cymbal with an upturned edge, this splash style was created with the guidance and help of the percussionist Louis Agudo. Made in Rotocast B20 bronze, completely hand made, they are special effects ideal for Latin Music.

## #BELL CRASHES

The combination of the raw bell of a Bionic Ride and the light bow of a Class Crash has resulted in an instrument that is truly unique. Used as a Crash the cymbal is explosive and crystal clear, used as a Ride has powerful projection due to its cutting and clear bell tones.

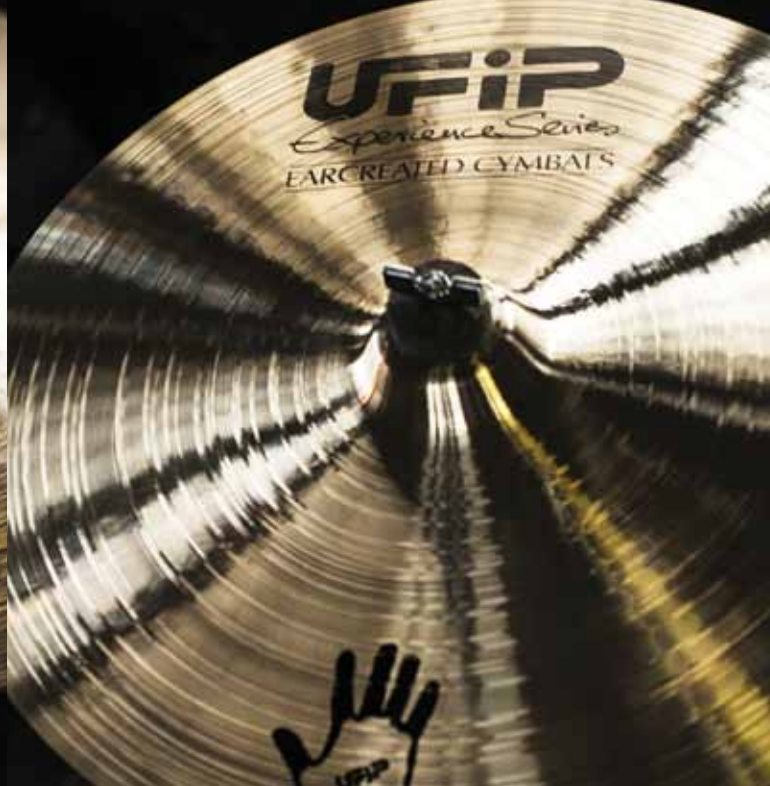
## #REAL CHINAS

A Chinese style cymbal with an unusual down turned edge and a standard shaped bell. These cymbals are available in Rotocast B20 Bronze and in Rolled Bronze. The afore mentioned cymbal has a sharp attack with a soft and rich sound. The Rolled Bronze cymbal undergoes the same heat process that is used on the Tiger Series and are distinguishable by their trashy and aggressive sound.

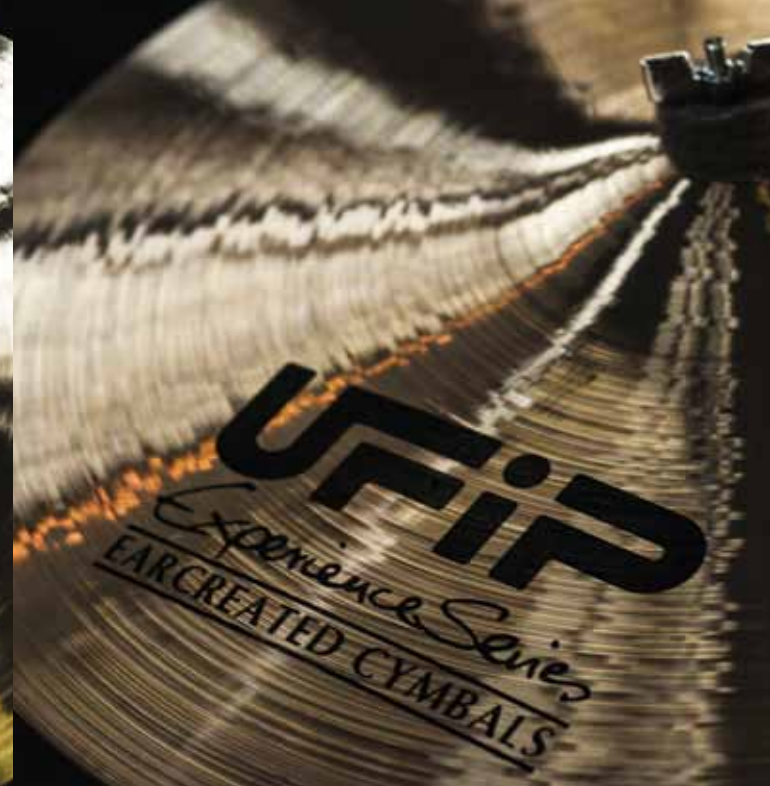




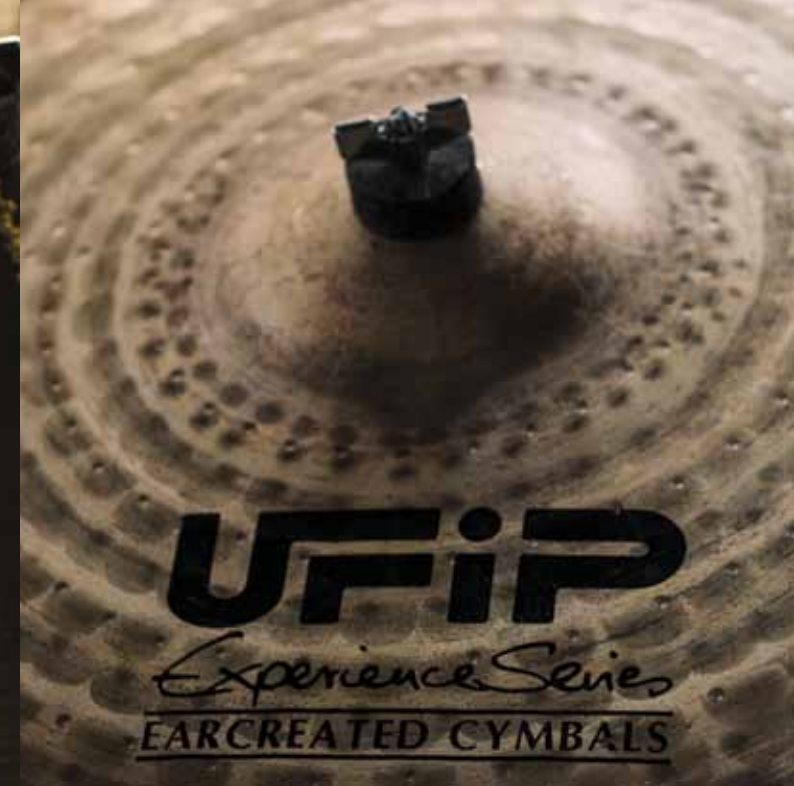
FLAT RIDE  
18" 20"



HAND CYMBAL  
14" 16" 18" 20"



COLLECTOR RIDE CLASS  
20" 21" 22"



COLLECTOR RIDE NATURAL  
20" 21" 22"

## #FLAT RIDES

A must of the UFIP production, the Flat Ride offer a dry and clear sound with a very controlled response to the sticks. Made in Rotocast B20 bronze, they are available in 18" and 20", in Class or Natural finish.

## #HAND CYMBALS

Hand Cymbals were conceived with the help of Marco Fadda. Made in Rotocast B20 bronze, these cymbals are very thin crashes to be played either by hand or with a violin bow.

## #COLLECTOR RIDES

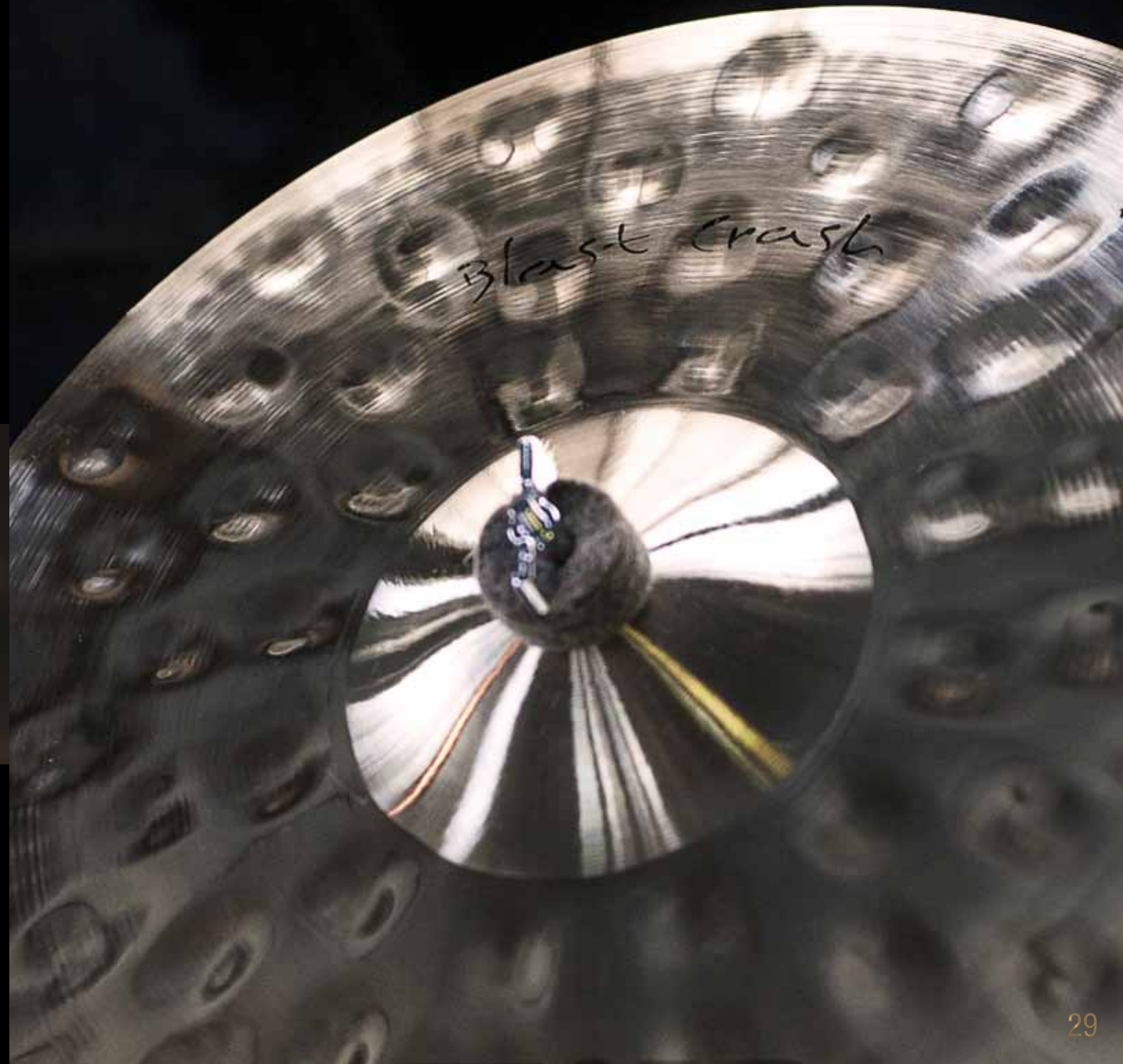
These cymbals represent the ultimate in Jazz Rides. Thin with a very dark timbre, encapsulating the sound of cymbals from the Jazz Era of the 40's and 50's. Made in Rotocast B20 bronze, completely hand hammered, the Collectors Rides are available from 20" to 22" in Natural or Class finishes.



# #blast crashes hi hats

BLAST HI HATS  
15" 16"

BLAST CRASHES  
17" 18" 19" 20"



A New Concept! After continuous research and development, we have created the new and explosive sound of the Blast Crashes and Hi-Hats. These cymbals have a contemporary sound for today's diverse music market. Hand made in Cast Bronze B20, the main design feature of the Blast cymbals is a double hammering process which incorporates both, traditional and new machine hammering procedures. The result is awesome! Bright and explosive, trashy and oriental with a very fast attack and short decay the crashes, full and powerful, loud and extremely dynamic the Hi-Hats. The Blast cymbals fit into all modern music styles and are perfect for Jungle, Drum and Bass and Electro.

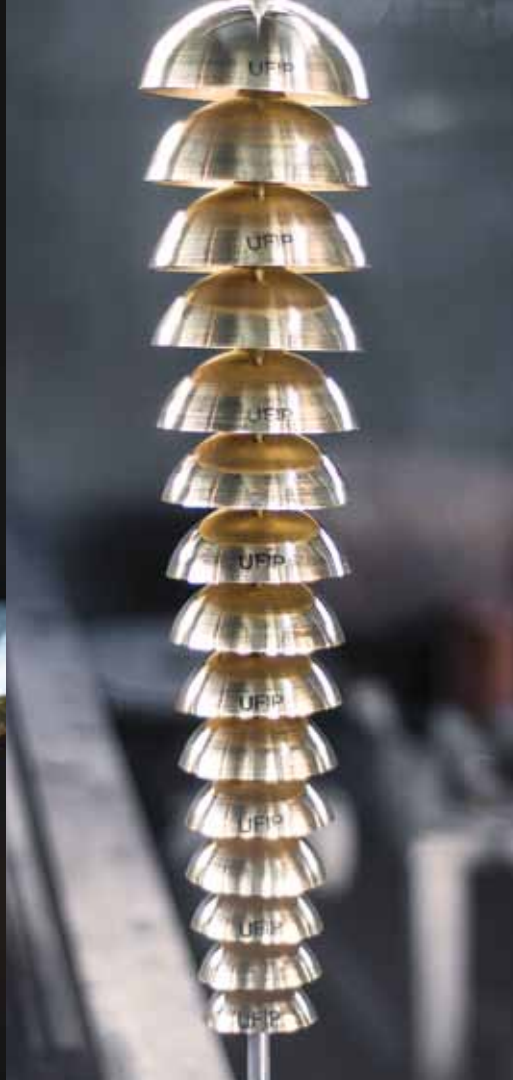


# #sounds & percus ston

Dedication to detail is the main concern of every UFIP cymbal maker. Even most of the small percussion instruments are made using UFIP's unique and precious bell bronze alloy. Be it the legendary Ice Bells or a pair of Tibetan Bells. No wonder they are so much sought after!

**#OGORORO**





SMALL  
MEDIUM  
LARGE

**#XIMBAU**

**#SIX TREE**

**#THREE DISC**

**#TIBETAN  
BELLS**

**#BELL TREE**

SMALL  
MEDIUM  
LARGE

**#BRASS  
TUBE**





7" 8"

25 41 52 TUBES

**#THREE BELL**

**#ICE BELLS**

**#WIND CHIMES**

**#BURNA BELLS**

# #sym phonic & marching

## SYMPHONIC SERIES

14" - 35 cm (L/M/H)  
15" - 38 cm (L/M/H)  
16" - 40 cm (L/M/H)  
17" - 43 cm (L/M/H)  
18" - 45 cm (L/M/H)  
19" - 48 cm (L/M/H)  
20" - 50 cm (L/M/H)  
21" - 53 cm (L/M/H)  
22" - 55 cm (L/M/H)

## B20 PROFESSIONAL MARCHING CYMBALS

12" - 30 cm  
13" - 33 cm  
14" - 35 cm  
15" - 38 cm  
16" - 40 cm  
17" - 43 cm  
18" - 45 cm

## LIGHT BRONZE MARCHING CYMBALS

13" - 33 cm  
14" - 35 cm

## BRASS MARCHING SERIES

13" - 33 cm  
14" - 35 cm







## #SYMPHONIC SERIES

The professional B20 Symphonic cymbals offer brilliance in sound and responsiveness, from a low sizzle to a full volume solo crash. Carefully matched according to weight and acoustic properties, they are offered in 3 weight categories: French (Light), Wien (Medium), German (Heavy). Sizes available, from 14" to 22"

## #PROFESSIONAL MARCHING CYMBALS

Made from the same B20 bronze alloy as the Symphonic Series but finished in a different kind of hammering process and surface type. These cymbals are mainly used in marching settings and offer precise attack and an unexpected acoustic presence at highest level. Marching Cymbals are available in medium and heavy in sizes 14" through 18".

## #LIGHT BRONZE MARCHING CYMBALS

Light Bronze Marching cymbals are lightweight instruments that offer a powerful sound. They are carefully matched in pairs selected from our new B12 alloy. This makes them specially suitable for the use in youth orchestras and community bands. They are available in sizes of 13" and 14".

## #BRASS MARCHING SERIES

Made on a basis of rolled brass, they guarantee an excellent quality level in comparison to the price. Entry level instruments but made with the same care and attention as professional lines. They come with leather straps and are available in sizes of 13" and 14".



# #gongs & tam tams

UFIP tam tams and gongs are famous for their important role in concert music and in music therapy. Targo Tam Tams are made in the traditional way of bell bronze. Currently they are available in sizes ranging from 20" to 28" with different sound characteristics. We also make a series of sheet bronze and sheet brass Tam tams and Gongs available in different sizes and different finishes.

TAM TAMS CAST  
BRONZE B20

TTF20 20" - 50 cm

TTF24 24" - 60 cm

TTF28 28" - 70 cm

**#CAST BRONZE  
TAM TAM**







TAM TAMS B8  
TRADITIONAL FINISH

TTL20 20" - 50 cm	TTL32 32" - 80 cm
TTL24 24" - 60 cm	TTL36 36" - 90 cm
TTL28 28" - 70 cm	TTL40 40" - 100 cm

Available also in Tiger finish

**#TAM TAM B8**



TAM TAMS BRASS

TTL32 32" - 80 cm
TTL36 36" - 90 cm
TTL40 40" - 100 cm

**#SYMPHONIC  
BRASS TAM TAM**



BRASS SYMPHONIC  
GONG

G32 32" - 80 cm

G36 36" - 90 cm

G40 40" - 100 cm

Available also with bell

**#BRASS GONG**



GONG B8  
WITH BORDER TIGER FINISH

G20 20" - 50 cm

G24 24" - 60 cm

G28 28" - 70 cm

Available also in Traditional finish

**#GONG TIGER**



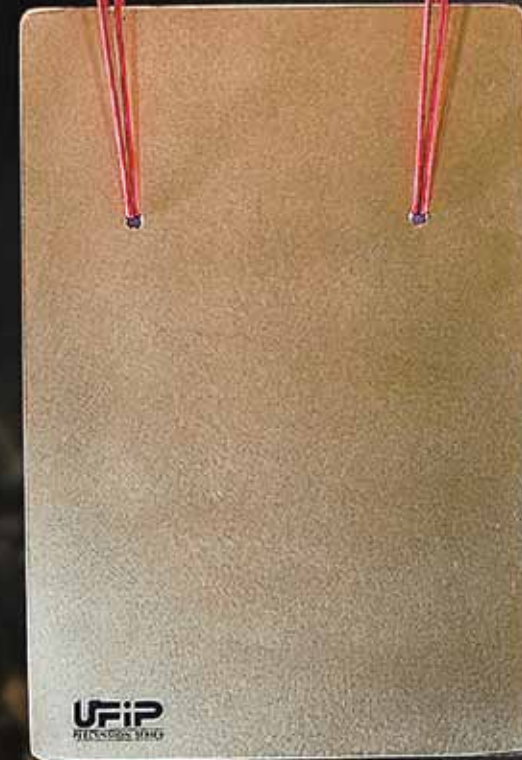
# #tuned instruments

Our company produces a complete variety of tuned percussion instruments, like crotales, chimes, and bell plates.



Complete octaves  
C4/C5 - C5/C6

## #CROTALES



Complete octaves  
C3/C4 - C4/C5 - C5/C6

## #FLAT BELLS



Complete octaves  
C3/C4 - C4/C5

## #TUBULAR BELLS



# #be social







**UFIP**

EARCREATED CYMBALS

▶ PLAY THE DIFFERENCE.

#

[www.ufip.it](http://www.ufip.it)

UFIP Earcreated Cymbals

Via Galileo Galilei, 20 | 51100 Pistoia - Italy

Tel.: +39.0573.532066 - Fax: +39.0573.532202

[info@ufip.it](mailto:info@ufip.it)